

# RayCi

## - Product Description -

CINOGY's sophisticated beam profilers are available with the specifically designed analysis software, RayCi, which supports Windows XP / Vista operating systems. It is available as 32 Bit / 64 Bit version and can control up to eight beam profiler cameras on a single computer simultaneously.

Due to its clearly designed menu structure, RayCi shows self-explanatory functions, which help the user to access quickly standard settings. Incomparable visualization modes, extensive analytical capabilities as well as new developed correction algorithms ensure the highest accuracy in laser beam analysis.

A wide range of beam width techniques e.g. 2<sup>nd</sup> Moment, Knife Edge, Moving Slit, Plateau, Gauss-Fit can be applied to determine quick and reliable standard beam parameters. The unique measurement tool enables the continuous monitoring of beam parameters, beam position and power density distribution. Helpful features like AOI Tracking, AOI Optimization, Zoom Functions, Look-Up Tables, etc. simplify the laser beam analysis.

The extraordinary graphical and analytical tool of RayCi can be used for live data (LiveMode) and stored data (SaveMode) simultaneously, while each mode has its own individual functions. This makes RayCi the most advanced analysis software on the market.

RayCi is equipped with flexible data and image output capabilities. This permits the user to store data and images in the format that is compatible with their needs.

A clearly arranged and printable protocol view displays the chosen measurement parameters as well as the most important laser beam analysis results.

RayCi is compatible with guidelines of the international standard organization for laser beam measurements:

- ISO 11145: Vocabularies and symbols
- ISO 11146: Beam width, propagation ratio,...
- ISO 11670: Beam positional stability,...
- ISO 13694: Beam power density distribution,...

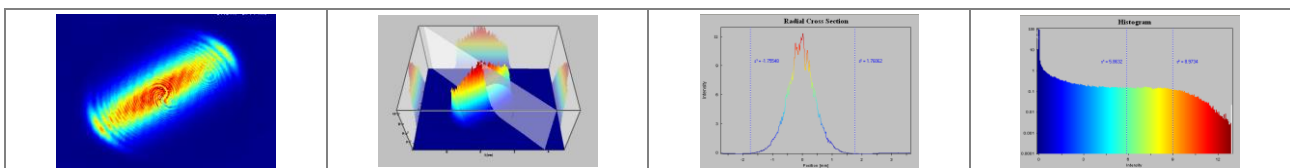
RayCi works only with a USB software protection lock. It is a hardware based security solutions to protect and encrypt the software against piracy.

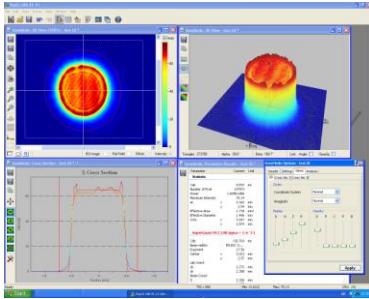
### MINIMUM SYSTEM REQUIREMENTS

- XP / Vista / Windows 7
- Pentium IV / AMD Processor
- 128 MB graphic card, Open GL V1.4 compatible
- 100 MB free memory
- PCI / PCIe slot for FireWire card
- USB port for dongle connection
- CD / DVD-ROM drive for software installation
- Internet access for update request

### COMING SOON!

Beam Quality M<sup>2</sup> Tool





## RayCi - Special Features -

### REAL-TIME BEAM PROFILING

2D / 3D intensity plots / Cross sections / Histogram  
Pointing stability (x-y fluctuation, COG- position analysis, ect.)  
Parameter stability (intensity, power, center x-y, beam size)  
Parameter results (beam statistics, beam width, beam parameter)

### CAMERA CONTROL

Multiple camera support  
Different measure types  
User-selectable exposure time and gain factor, auto-exposure time  
Floating average and variable brightness

### ANALYSIS FUNCTIONS

Beam statistics (power, max intensity, COG, etc.)  
Beam width (2<sup>nd</sup> Moment, Gauss / Super-Gauss-Fits, Plateau, Knife Edge, Moving Slit, ect.)  
Beam parameter (beam width, ellipticity, uniformity, etc.)

### CALIBRATION AND CORRECTION TOOL

Background subtraction, auto-background  
Pixel correction technology (offset correction, linearity, etc.)  
Power calibration

### OTHER FEATURES

User-defined Area of Interest (AOI)  
AOI tracking and optimization  
Color palettes incl. auto-contrast function  
Zoom functions  
2D profile arithmetic operations, filters, transformations, etc.  
E-mail support

### FLEXIBLE OUTPUT

Data: txt, tiff  
Image: jpeg, png, bmp, gif, tiff  
Protocol: pdf

### VERSION

RayCi Professional  
RayCi Standard

